

DAILY REPORT #08 – DORIS NORTH INFRASTRUCTURE/ NORTH DAM

Prepared by:	John Kurylo/ Jeff Orr	Date:	2012.01.13
Reviewed by:		Project #:	1CH008.058.0320
Role	Company	Personnel – Position	On Site
Client	Hope Bay Mining Limited (HBML)	Angela Holzapfel – ESR Compliance Manager David Vokey – ESR Coordinator Don Ethelston – HSLP Advisor Dean Wold - Safety Jill Turk – ESR Coordinator Katsky Venter – ESR Manger Michelle Tanquay – ESR Site Manager Stirling Kelly – HSLP Advisor	Out In No Out No Out In Yes
	JDS	Lloyd Jackson – Mechanical Superintendent Sven Archimowtiz – Electrical Superintendent Doug Fielding – Construction Manager Ishan Fechter – Construction Coordinator Jerry Graham – Construction Manager Kevin Whieldon – Project Coordinator Mark Valeriote – Construction Manager	Yes Yes No In Yes Out Out
Engineering Design Consultants	SRK Consulting (Canada) Inc.	John Kurylo – Site Engineer Megan Miller – Site Engineer Lawrence Borowski – Site Engineer Murry McGregor – Site Engineer Lowell Wade – Senior Engineer	In No No No Out
	EBA Engineering Consultants Ltd.	Jeff Orr – Project Manager Jennifer Stirling – Geologist John Jaramillo – Eng. Technologist Thomas Bradshaw – Junior Engineer	In No No No
Earthworks Contractor	Nuna Logistics	Bradford Watkin – QC Manager Dale Craig – Safety Don Webber – Foreman Doug Haverland – Area Superintendent Gary Sodhi – Field Engineer Georges Cornelissen – Survey Manager Jeff Roberts - Surveyor Jim Cardinal – Foreman Kevin Oakes – Project Engineer Kevin Kozdrowski – Foreman Margret Caley – Surveyor Matt McKay – Civil Supervisor Mike MacMaster – Surveyor Mike Price – Field Engineer Nick Stoneberger – Superintendent Rick Peters – Foreman Ron MacMaster – Surveyor Simon Chipper – Civil Supervisor	In Out No No In Out In No Yes Yes No No Yes Out Yes Yes Yes Yes
External Distribution List:	SRK: Seema Kang, Lowell Wade, Maritz Rykaart EBA: Nigel Goldup Nuna: Chris Petrovic JDS: Bob Prince-Wright HBML: Dave Power, Gerry Benson		
This Construction Daily Report is produced as an internal communication document between SRK site and head office staff. Any distribution of this report outside of SRK is done as a courtesy, and the information contained in this report are for information only to those external parties.			

WEATHER (ROBERTS BAY)

<http://www.wunderground.com/weatherstation/WXDailyHistory.asp?ID=INUNAVUT3>

Temperature/Wind Chill (°C)	6AM:-29.3/-40.3	12PM:-25.8	6 PM :-24.8/-38.0	12 AM:-20.7/-31.2
Precipitation (mm)	Rain: None		Snow: None	
Conditions	Day Shift: Clear, moderate wind		Night Shift: Partly cloudy, moderate wind	
Daily norms (°C)	24 hour high: -20.7		24 hour low: -30.4	

HEALTH, SAFETY AND ENVIRONMENT

- No incidents were reported

COMMENTS, CORRESPONDENCE AND ACTIVITIES**DAILY MEETING WITH NUNA AND HBML TEAM:**

- The daily meet was attended by ADCO, ACI, Williams Wireless, Nuna [Nick Stoneberger, Simon Chipper, Kevin Oakes, Bradford Watkin, Gary Sodhi], Newmont Safety [Stirling Kelly], JDS [Jerry Graham, Ishan Fechter, Lloyd Jackson], SRK [John Kurylo], EBA [Jeff Orr].

Topic	Status
Health and Safety and Environment	<ul style="list-style-type: none"> No incidents to report Fire investigator is now on site. Fire investigator has cautioned the use of small electrical space heaters, if they will be left unattended. A site assessment/ inventory of areas where the small electrical space heaters are present is expected to be carried out in the coming days. Heaters will be removed if/ as needed. JDS to talk to ESR about snow removal off Doris Lake.
North Dam	<ul style="list-style-type: none"> No issues with removal of material at the North Dam. Nuna continues at the North Dam to remove 5/8" clear cover over the key trench. A dry run is planned for the FCP plant today. The disconnect circuits on the FCP plant are planned to be checked by Nuna. Nuna survey will continue to check/ provide grades to the elevation that frozen core material placement stopped at in 2011. Additional cleaning of the key trench is planned for today.
Water Management Structures	<ul style="list-style-type: none"> SRK is currently working on updating the Doris North Water Diversion Berm IFC drawing package with the new original ground survey in underway. SRK and Nuna survey to visit the location of Doris North Camp Sump #1 (~SSE of the main camp pad area). A new location for Sump #1 will be determined in the coming days, when all required survey data has been obtained. Snow pads are expected to be created around the Sump #1 and #2 locations in the coming days. Nuna and Williams Wireless to discuss the cables around the future Doris North Diversion Berm Area.
General	<ul style="list-style-type: none"> A plan has been developed for the backup power in the main office. ACI required a bin for steel (to be brought to their work site today). ATCO requires some gravel at their work site (to be supplied by Nuna). It is expected that next Friday's flights will also be cancelled. Areas are still being cleared in preparation for core box relocation

SURVEY:

Required	•
Data Received	•
Outstanding	<ul style="list-style-type: none"> Original ground around the sump location (survey completed) Toe of the existing, widened, Float Plane Dock Access Road, around the location of Sump #1 (survey completed)
Upcoming	<ul style="list-style-type: none"> Survey of frozen core surface after cleaning/ scraping activities at N. Dam.

NORTH DAM/FROZEN CORE PLANT PAD:

- Two excavators were used during the day and night shift to remove additional frozen 5/8" clear material from the key trench footprint.
 - The central portion of the key trench is near grade now and portions of the upstream side slopes.
 - Additional removal of 5/8" clear material is required on the SW and NW ends. Frozen 5/8" material is on the order of 0.2 to .3m thickness in areas.
- Material removed from the key trench (primarily frozen 5/8" material) was loaded into a 730 haul and end dumped on the upstream side of the dam. The 5/8" end dump piles still require blending with ROQ on the upstream.
- Survey marked out the grade (for material removal) to the frozen core material (i.e. frozen core material placed in 2011).
- Damaged/cut cable ends for cable ND-HTS-060-28.8 are now exhumed/ exposed. This cable is expected to be sliced in the coming days.
- In the afternoon an excavator was used to further dig into the frozen core material stockpile, at the FCP pad. The outer frozen crust of material was peeled back.
- A dry run was carried out at the FCP plant at the end of dayshift. Minor tweaks to the FCP plant will be made tomorrow to make things runs smother. Overall the dry run was successful.
- Some of the ground temperature cables, installed in the North Dam, were read. The current location of the ground temperature cables are shown in Figure 1 (found at the end of the report). Today's readings are provided below.

Bead No.	Ground Temperature Cable Temperature (°C)						
	ND-VTS-130-US	ND-VTS-085-US	ND-VTS-060-US	ND-VTS-060-KT	ND-VTS-060-DS	ND-HTS-040-31.5	ND-VTS-040-KT
1	-10.25	-9.16	-11.42	-17.39	-10.52	-19.88	-20.32
2	-8.25	-7.27	-9.27	-14.18	-9.34	-24.01	-17.23
3	-6.95	-5.93	-7.49	-11.04	-8.30	-25.95	-15.11
4	-6.59	-4.80	-6.45	-8.84	-6.69	-25.92	-11.95
5	-7.26	-4.85	-6.96	-8.00	-5.52	-25.66	-10.00
6	-7.69	-5.45	-7.47	-7.57	-4.94	-24.68	-8.75
7	-7.94	-6.11	-7.65	-7.36	-4.94	-20.97	-8.00
8	-8.11	-6.64	-7.76	-7.32	-5.35	-20.37	-7.63
9	-8.17	-7.02	-7.79	-7.46	-5.91	-22.04	-7.77
10	-8.26	-7.36	-7.87	-7.64	-6.48	-22.01	-8.04
11	-8.24	-7.51	-7.80	-7.69	-6.63		-8.03

- EBA completed an inventory of the material testing lab, located at the FCP Plant Pad.
 - One Ohaus Corporation Balance (22kg – model: AdventurePro AV8101) was noted to be missing. JDS was informed about the missing scale.
 - Additional 5 gallon (~18.9 L) buckets need to be obtained in the coming days.

DORIS NORTH CAMP:

- SRK visited the location of Doris North Camp Sump #1 and #2 with Nuna survey.
- Sump #1 was staked out (based on dwg DN-DMC-045) and confirmed to be on the south slope of the expanded Float Plan Dock Access Road.
- With the assistance of Nuna Survey, SRK estimated a new location for Sump #1. The center of Sump #1 was moved/ resituated ~ 5m to the SSE of the IFC stakeout point.
 - One the requested survey information is available (see 'Survey' section of this daily) then a final check will be done to confirm that the proposed location meets the design intents.
- SRK requested that the original ground around the location of the new proposed Sump #1 location be surveyed. This was completed. Note that the snow cover around this area is very thin.
- The construction of snow pads around the Doris North Camp sump locations commenced today.
 - Snow pad will be used to assist with upcoming sump construction activities, to minimize disturbance to surrounding areas.
 - The approximate area for the Sump #1 snow pad was marked by survey.
 - Haul trucks dumped snow near the Sump #1 and #2 locations.
 - An excavator spread snow around the Sump #2 area (see dwg DN-DMC-045 for location).
 - The snow pad for Sump #2 was watered.
 - Drilling is planned within the sump footprints, to assist with minimizing tundra disturbance during the sump excavations (i.e. the sump footprint will be drilled first, expected to have a 'Swiss cheese' type appearance, then will be ripped/ excavated).
 - At this time no drillers are on site. West Arc is expected to mobilized to site in the coming weeks (as early as the end of next week) to assist with drilling around the sump locations.

PHOTOS:



Photo 1: ESE view down S shoulder of the Float Plane Dock Access Road. Note that the surveyed location of Doris Camp Sump #1 (see dwg DN-DMC-045) is highlighted by the yellow arrow

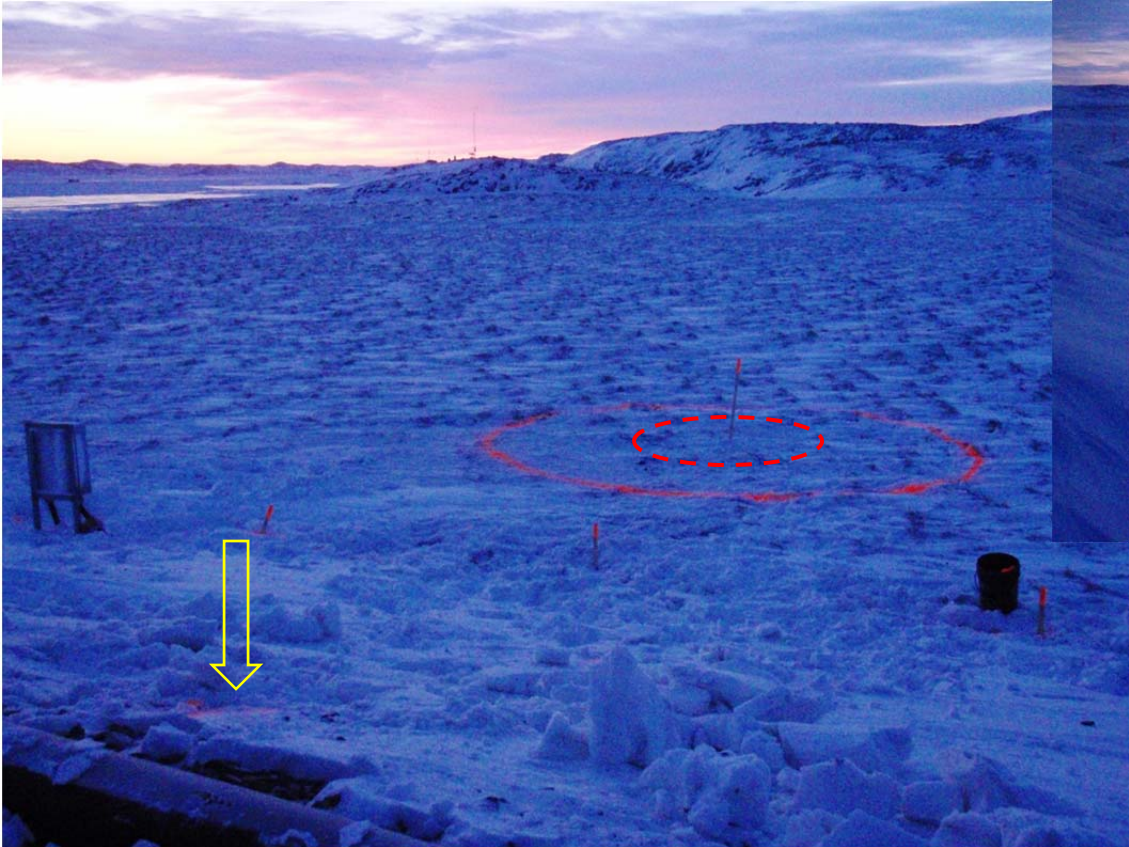


Photo 2: ~ SE view from the S shoulder of the road towards a marked new estimated/proposed location for Sump #1 (red dashed circle). The original Sump #1 location is highlighted by the yellow arrow.



Photo 3: ~ E view down the S shoulder of the expanded Float Plane Dock Access road towards the proposed new location for Sump #1. Final sump location to be determined after review of survey data.



Photo 4: View of excavator preparing snow pad around Sump #2 location (sump location outlined on DN-DMC-045)



For Reference: Location of Doris North Sump #1 and 2

Photo 5: ~NNW view of the Roberts Bay Tank Farm.

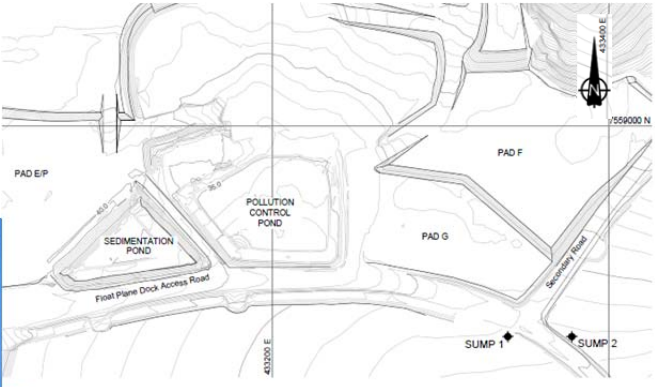




Photo 6: Progress photo of the North Dam construction. Photo taken from Photo Point 1, looking ~ south-east.



Photo 7: Progress photo of the North Dam construction. Photo taken from Photo Point 2, looking ~ northwest



Photo 8: ~SSW view down key trench. Note excavator scratching/ removing 5/8” material in foreground.



Photo 9: View of construction progress in the North Dam key trench, ~NE view down trench. Note the end dump piles of 5/8” material on the upstream of the dam.

Photo 10 (bottom left): View of the central portion of the key trench, as scratching/ 5/8” material removal progresses; ~ WSW view.



Photo 11 (mid left): Close up view of frozen 5/8” clear material being excavated in the North Dam key trench.



Photo 12 (bottom right): Excavator working on breaking/ mixing up frozen core material stockpile, ~NE view.

